



1863 - 2013 Serving Public Education for 150 Years

Glen Innes Public School Newsletter

Term 3 - Tuesday 3rd September 2013 (Week 8)

Good luck to our athletes travelling to Tamworth this Friday. Mrs Webster will be accompanying the team.

Thank you to everyone who has supported the Kids for Cancer and Ronald McDonald fundraisers over the past two weeks.

The raffle tickets for the bike will go on sale near the lunch centre from tomorrow morning.

The children were very excited to wave off the riders this morning and they looked terrific. The local paper will have some photos as well.

The Walkathon is on tomorrow. Parents are welcome to join us as usual.

Primary: 11:30am **Infants:** 1:45pm

Sue Belford
Principal

Kindergarten Transition

Parents are reminded to drop their children off and collect them from the new hall via Cameron Lane instead of the office area.

P&C News Labels

Don't forget the P&C have created an account with 'Stuck on You' to encourage parents at Glen Innes Public School to purchase labels for their children's belongings to help minimise lost property.

There is no minimum spend and parents can place orders all year round - and by nominating the

school's P&C up to 20% commission from your purchase will go towards their fundraising efforts.

Orders can be placed by going to the following link:

<http://www.stuckonyou.com.au/gleninnesps>

If parents order over the phone or do not follow this link, the code they need to know is: gleninnesps (all one word, lower case).

Gigha Goldman
Secretary

Nutrition Information Session

For parents, carers and community members

When: Wednesday 18th
September

Where: Glen Innes Public School
Hall

Time: 2:00pm - 3:00pm

Guest Speaker: Health Nutritionist
from Hunter New England Health

Did you know????

Schools fees were a feature of schools as early as 1865. The school fees were increased to sixpence in that year. Certainly a greater expense in those days than today in terms of what that sixpence would be worth today!

Teachers of the day were not that well off either. The teacher, Mr Edmund Baines, lost three of his pay cheques when the coach was held up by bushrangers in 1865.

Upcoming Events

**Wednesday 4th
September**

P&C Walkathon
National Health and
Physical Education Day

Thursday 5th September

Kindergarten Transition
New Hall
1:30pm - 2:30pm

Friday 6th September

Regional Athletics
Tamworth

Monday 9th September

Camp Quality
Bike Ride Visit

**Thursday 12th
September**

Kindergarten Transition
New Hall
1:30pm - 2:30pm

**Wednesday 18th
September**

Stewart House
Mini Fete
(Stage 2 Students)

**Thursday 19th
September**

Kindergarten Transition
New Hall
1:30pm - 2:30pm

Lunch Centre Roster — 9th - 13th September

G Goldman	K Brewer	K Brewer (S)	K Brewer (S)	K Brewer (S)
S Willis	Volunteer Required	A Brown	A Hartin	D Burton
J Jones	Volunteer Required	Volunteer Required	Volunteer Required	Volunteer Required

Recess Specials This Week

1/2 Chicken & Gravy rolls
\$1.50

Next Week

Pizza Muffins
\$1.50

YLP RESEARCHED, WROTE AND SPOKE ABOUT SOME VERY UNUSUAL ANIMALS!



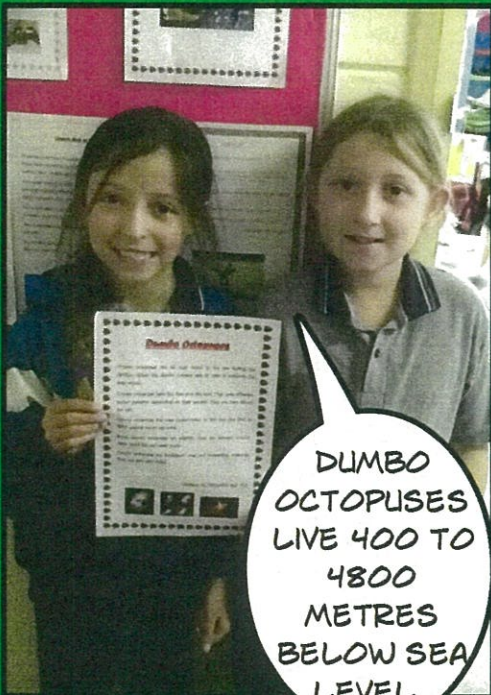
A NAKED MOLE RAT!
EW!



PINK FAIRY ARMADILLOS ARE ABOUT AS LONG AS A GLUESTICK. FASCINATING!



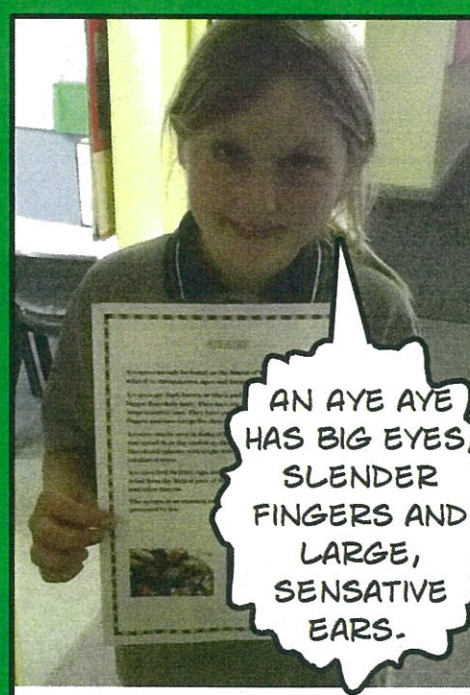
SO THAT IS WHAT AN AYE AYE LOOKS LIKE! WOW!



DUMBO OCTOPUSES LIVE 400 TO 4800 METRES BELOW SEA LEVEL.



WE HAVE FOUND SOME SUPER FACTS MISS PETTIT!



AN AYE AYE HAS BIG EYES, SLENDER FINGERS AND LARGE, SENSATIVE EARS.



BLOB FISH EAT PRETTY MUCH ANYTHING THAT SWIMS IN FRONT OF THEM. HOW LAZY!



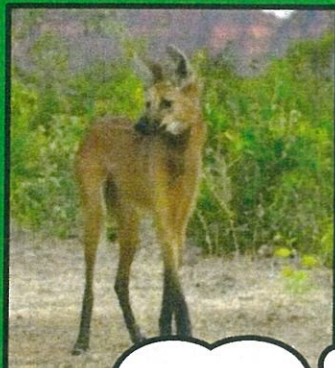
OOO, THAT IS INTERESTING!



WOW! THE NAKED MOLE RAT KEEPS SNAKES AWAY FROM ITS COLONY.



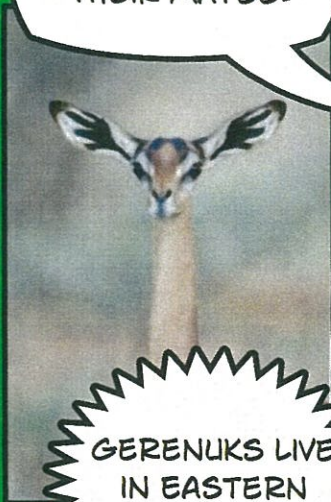
SUPERB BIRDS OF PARADISE USE THEIR BRIGHT COLOURS TO SHOW OFF TO THEIR MATES.



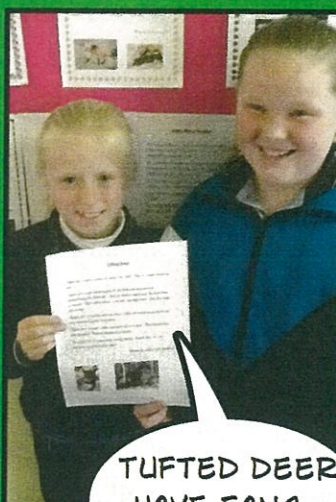
THE MANED WOLF IS THE LARGEST CANINE SPECIES IN SOUTH



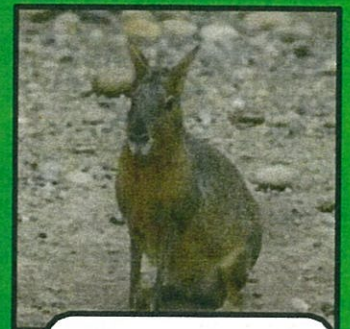
YETI CRABS LOOK LIKE A YETI CROSSED WITH A CRAB!



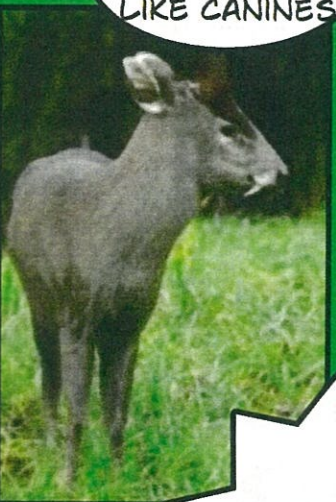
GERENUKS LIVE IN EASTERN AFRICA.



TUFTED DEER HAVE FANG-LIKE CANINES



THE PATAGONIA MARA IS A MAMMAL, WHICH IS CLOSELY RELATED TO THE GUINEA



THE STAR-NOSED MOLE'S NOSE HAS 22 FLESHY TENTACLES.



JAPANESE SPIDER CRABS CAN GROW UP TO 4M LONG!